

# PHILLIPS ACADEMY | ANDOVER

## 2017–2018 Profile for College Admission Offices

### THE ACADEMY

Phillips Academy (also known as Andover), a residential secondary school, seeks students of intelligence and integrity from diverse cultural, racial, socioeconomic and geographic backgrounds.

#### NEED-BLIND ADMISSION

In 2007, the Academy adopted a need-blind admission policy. The Academy meets 100 percent of demonstrated need.

#### EQUITY & INCLUSION

Andover is committed to establishing a community that encourages people of diverse backgrounds and beliefs to understand and respect one another and be sensitive to differences of gender, ethnicity, class, and sexual orientation. Andover's constitution charges the Academy to prepare "youth from every quarter" to understand that "goodness without knowledge is weak... yet knowledge without goodness is dangerous." Students of color constitute more than one-third of the student body. A typical entering class includes students from 40 or more states and 25 or more countries.

#### CAMPUS LIFE

In order to bring the advantages of a small school to Andover, we have adopted the cluster system. A cluster system is a group of residence halls in the same area. The cluster system includes five groups of about 220 students each. Each cluster functions independently, managing its own social activities, academic advising, disciplinary counseling, and athletic affairs under the leadership of a cluster dean.

#### LEARNING IN THE WORLD

Andover students can participate in several off-campus study programs both in the United States and in other countries. Some, such as School Year Abroad, are designed to last the entire academic year. Other programs take place during a single trimester or occur during the summer.

#### ACTIVITIES

Each student spends approximately two hours every weekday afternoon in a required supervised activity. For most students, this is an athletics commitment at the varsity, junior varsity, or intramural level. For others, afternoons focus on volunteer work through the Community Engagement Program, independent musical pursuits, or physical fitness/endurance activities (e.g., Outdoor Pursuits, martial arts, dance).

#### ACADEMIC EXCELLENCE

Under the trimester program, the school year is divided into three terms, each consisting of approximately 10 weeks of classes plus an assessment period. Many courses are yearlong, some are term-contained, and others

are organized as two-term sequences. Students are normally expected to carry five courses each trimester. Most courses meet four or five periods per week. Some courses, as noted in the *Course of Study*, meet six or more hours per week. Eleventh-graders or seniors who face an unusually demanding term occasionally are advised to enroll in four courses, provided at least three of

these are advanced courses. Postgraduates usually take five courses per term (see list of Advanced Courses on page 2). Over the span of their last two years, students are required to complete at least 27 trimester units.

Andover's academic program is based upon the premise that students are capable of studying independently, responsibly, and with self-direction. As a result, students spend a significant number of hours on homework, research, and other out-of-class study and projects.

In most courses, especially those taken to meet diploma requirements, class time and homework together can be expected to require a total of about nine hours per week per course. Thus, a typical student enrolled in five courses can expect to spend at least 45 hours each week on academic pursuits—and more than that when significant papers are due or to prepare for exams.

#### DISCIPLINARY POLICY

Students and college counselors will work together to address questions about serious disciplinary infractions (suspension and probation) when asked on college applications.

**1778**  
YEAR FOUNDED

**13**  
AVERAGE CLASS SIZE

**300+**  
AVAILABLE COURSES

#### PHILLIPS ACADEMY

180 Main Street  
Andover, MA 01810-4161

School Code Number: 220030

John G. Palfrey, Head of School

#### COLLEGE COUNSELING OFFICE

Sean M. Logan, Dean

Katherine B. Fritz, Director

#### ASSOCIATE DIRECTORS

Anya P. Brunnick

Marvin A. Coote

Magdalena L. Farnsworth

Karina E. Hernandez-Guarniz

Aya S. Murata

Jamison H. Phinney

Nicole K. Shadeed

M. Kenneth Shows

Stephen A. Silversides\*

LaShawn N. Springer

Taylor C. Ware

\*sabbatical 2017–2018

#### CONTACT INFORMATION

Phone: 978-749-4150

Fax: 978-749-4160

college-counseling@andover.edu

www.andover.edu/cco



Phillips Academy  
**ANDOVER**

# ACADEMY COURSES

## COURSE NUMBERS

The first digit corresponds to the “level” of the course. The second and third digits (as in ART225) reflect organizational schemes at the departmental level and, therefore, will be used differently by different departments. Letters also are used for these purposes.

- **Level 1 = 100;** for courses that introduce a subject (SPA100) or that are typically taken by 9th-graders (BIO100, ENG100).
- **Level 2 = 200;** for courses that are the second level in a sequence (SPAN-200) or that are typically taken by 10th-graders or 9th-graders (ART225, HSS200).
- **Level 3 = 300;** for courses that are the third level in a sequence (SPA300), or for courses that are appropriate for 11th-graders (ENG300) or for 9th-, 10th-, and 11th-graders (PHR300, CHM300).

## ADVANCED COURSES

Listed below are all advanced, honors, and accelerated and/or Advanced Placement courses. These rigorous and demanding courses require extra preparation and study time. Most use college texts and are paced to match undergraduate offerings.

A few 300-level, some 400-level, and all 500-level courses are at or beyond typical AP level, and the 600-level courses are typically the equivalent of sophomore-level college courses.

For course titles and descriptions, refer to Andover’s *Course of Study*, available at [www.andover.edu/Academics/ProgramInfo/Documents/COS2017-2018.pdf](http://www.andover.edu/Academics/ProgramInfo/Documents/COS2017-2018.pdf).

### Art

All 300–600-level studio courses are at a level appropriate for students interested in assembling an AP portfolio  
Art 441, 442, and 443: History of Art are at AP level

### English

All 500-level courses are at or beyond AP level

### History and Social Science

History 300–310 are at AP level  
History 520 and 521 together prepare for Macro and Micro Economics AP  
All 500-level and above are at or beyond AP level

### Mathematics

All 280–595 level courses are at a level appropriate for students interested in assembling an AP portfolio  
Math 630: Honors Seminar, 651, and 661 (discontinued as of fall 2014) are beyond AP level  
Math 650: Multivariable Calculus and Linear Algebra  
Computer 500: AP Computer Science A or B, Computer 630 Honors Seminar is beyond AP level

### World Languages

Arabic 120 is accelerated  
Chinese 120, 220, and 320 are accelerated  
Chinese 400, 420, 440, and 520 are advanced  
Chinese 500 and 600 (discontinued as of fall 2014)  
Chinese 620 and 640 are beyond AP level  
Classics 150: Ancient Greek is accelerated  
Classics 400 and 500: Ancient Greek are advanced  
French 120, 220, and 320 are accelerated  
French 400, 401, and 520 are advanced  
French 620 is beyond AP level  
German 150 and 250 are accelerated  
German 400 and 520 are advanced  
German 600 is beyond AP level  
Japanese 400, 420, 500, 520, and 600  
Latin 150 is accelerated  
Latin 520: Vergil and Caesar is at AP level  
Latin 600 is beyond AP level

- **Level 4 = 400;** for courses that are the fourth level in a sequence, or for courses that are appropriate for seniors (but do not qualify for the 500 or 600 designations).
- **Level 5 = 500;** for courses that are equivalent to college freshman classes, sometimes, but not always, indicated by explicit preparation for an AP exam.
- **Level 6 = 600;** for courses that would typically be taken by majors in the subject in college, or for courses typically taken after the first year of college.
- **Performance-based credit = 900;** for course credit associated with performance, such as music lessons or participation in music ensembles for credit.

Russian 150 and 250 are accelerated  
Russian 520 and 600 are advanced  
Spanish 120, 220, and 320 are accelerated  
Spanish 400, 401, 500, 510, and 511 are at AP level  
Spanish 520, 521, and 620 are beyond AP level  
Spanish 550 (discontinued as of fall 2014)

### Music and the Performing Arts

Music 400, 410, 460, 500, 540, 550, 901, 903, and 906  
Music 485 & 530 (both discontinued as of fall 2016)

### Philosophy and Religious Studies

All 400- and 500-level courses

### Science

Biology 500 is at AP level  
Biology 540, 560, and 570 (discontinued as of fall 2014)  
Biology 580 is beyond AP level  
Biology 600, 610, and 620: Molecular and Cellular Biology: Laboratory Research  
Chemistry 550 is at AP level  
Chemistry 580 & 610: Organic Chemistry are beyond AP level  
Physics 395 (discontinued as of fall 2014)  
Physics 400  
Physics 530: Astronomy Research  
Physics 550 and 580 are at AP level  
Physics 600, 630, and 650 are beyond AP level

### Theatre and Dance

All 300- and 400-level electives are appropriate for portfolio preparation  
THD510: Advanced Acting  
THD539: August Wilson  
THD565 (discontinued as of fall 2015)  
THD900: Andover Dance Group Seminar  
THD901: Advanced Practical Theatre Application  
THD902: Advanced Studies in Dance Performance  
THD903: Advanced Studies in Technical Theatre Production  
THD910: Studio Production  
THD920: Play Production Intensive

## ACADEMIC STANDING

Students are not ranked, and we do not calculate a cumulative grade average.

## GRADING SYSTEM

- The grading scale is from 0 to 6.
- A few courses are graded as Pass/ Fail.
- Assessment periods conclude November 17, March 2, and June 1.
- Beginning with the 2014–2015 academic year, there is no honor roll designation.

- 6** Outstanding (High Honor)
- 5** Superior (Honor)
- 4** Good
- 3** Satisfactory
- 2** Low Pass, but certifying
- 1** Failure
- 0** Low Failure

*Please note that students receive Pass/Fail grades for English and history courses in the fall of 9th grade. For this reason, we do not compute a grade point average for this term.*

## THE 2017–2018 STUDENT BODY

	Males*	Females*	Total
Boarding	414	434	848
Day	156	146	302
<b>Total</b>	<b>570</b>	<b>580</b>	<b>1,150</b>
Students of Color	<b>48%</b>		

\*sex assigned at birth

## CLASS DISTRIBUTION

Grade 12	339 (includes 16 postgraduates)
Grade 11	301
Grade 10	288
Grade 9	222
<b>Total</b>	<b>1,150</b>

## GEOGRAPHIC DISTRIBUTION

**39**  
number of states (plus Washington, D.C.)

**45**  
number of countries

**133**  
number of international students

## FINANCIAL AID

Percent of student body **48%**

Total annual financial assistance **\$22 million**

# CLASS OF 2018 STANDARDIZED TESTING

## SAT SUMMARY 1600 (239 students)

Section	Middle 50%	Mean
Evidence Based Reading & Writing	680–750	720
Math	34–40	37
Mathematics	680–790	740
Reading	33–38	36
Writing	34–38	36

## SAT SUMMARY 2400 (18 students)

Section	Middle 50%	Mean
Critical Reading	570–740	659
Mathematics	640–770	702
Writing	580–700	648

## ACT SUMMARY (160 students)

Section	Middle 50%	Mean
ELA	29–32	28.9
English	30–35	32.3
Math	28–34	31.1
Reading	32–35	32.6
Science	27–34	30.5
STEM	28–34	30.5
Writing	0–9	7.2
<b>Composite</b>	<b>30–34</b>	<b>31.6</b>

## ACT SUMMARY (taken before October 2015; 5 students)

Section	Middle 50%	Mean
English	29–29	29.0
Math	32–32	32.0
Reading	31–31	31.0
Science Reasoning	34–34	34.0
<b>Composite</b>	<b>30–34</b>	<b>32.0</b>

## ADVANCED PLACEMENT 2017

449 candidates sat for 913 examinations.  
The overall distribution of scores is:

5..... **53%**  
4..... **28%**  
3..... **14%**  
2..... **4%**  
1..... **1%**

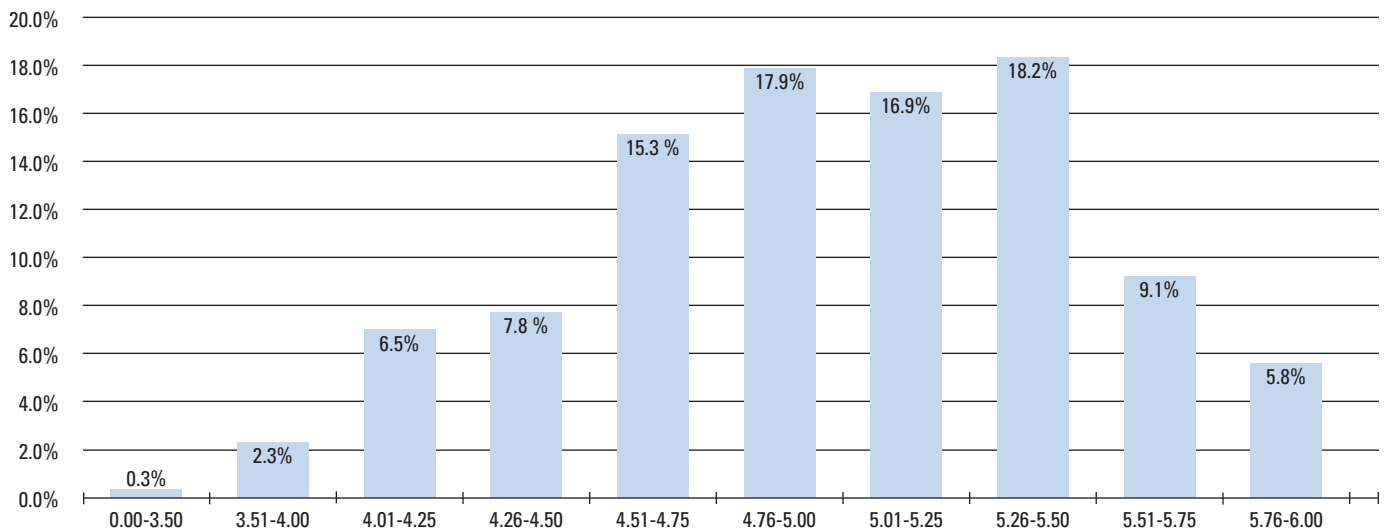
## SAT SUBJECT TEST

Class of 2018

Subject	Mean Score	No. of Tests
BY-E	668	21
BY-M	685	27
CH	705	83
CL	671	7
EN	639	92
FL	757	3
FR	700	12
GM	596	5
JL	800	1
LT	726	14
M1	662	17
M2	733	193
PH	719	49
SL	705	2
SP	659	21
UH	664	29
WH	608	4

## GRADE DISTRIBUTION RANGE CLASS OF 2018

June 2017



# CLASS OF 2017 MATRICULATION STATISTICS

COLLEGE/UNIVERSITY	MAT	COLLEGE/UNIVERSITY	MAT
American Univeristy.....	1	Reed College.....	1
Amherst College.....	5	Rensselaer Polytechnic Institute.....	1
Babson College.....	1	Rhodes College.....	1
Barnard College.....	7	Rice University.....	1
Bates College.....	2	Roger Williams University.....	1
Boston College.....	5	Saint Michael's College.....	1
Boston University.....	5	Salve Regina University.....	1
Bowdoin College.....	1	Santa Clara University.....	1
Brandeis University.....	1	Scripps College.....	1
Brown University.....	6	Skidmore College.....	1
Bryn Mawr College.....	1	Smith College.....	2
Bucknell University.....	2	St. John's University - Queens Campus.....	1
California Institute of Technology.....	2	St. Lawrence University.....	1
Carleton College.....	1	Stanford University.....	4
Carnegie Mellon University.....	3	Swarthmore College.....	2
Case Western Reserve University.....	1	Technische Universität Wien.....	1
Claremont McKenna College.....	2	The George Washington University.....	3
Colby College.....	2	The University of Edinburgh.....	1
College of Charleston.....	1	Trinity College.....	1
College of the Holy Cross.....	1	Tufts University.....	13
Colorado College.....	1	Union College.....	2
Columbia University.....	8	University of California, Berkeley.....	8
Cornell University.....	10	University of California, Davis.....	1
Dartmouth College.....	3	University of California, Los Angeles.....	2
Davidson College.....	2	University of California, Santa Barbara.....	1
Duke University.....	4	University of Cambridge.....	1
Dutchess Community College.....	1	University of Central Florida.....	1
Emory University.....	2	University of Chicago.....	13
Franklin & Marshall College.....	1	University of Connecticut.....	1
Georgetown University.....	2	University of Denver.....	1
Georgia Institute of Technology.....	2	University of Florida.....	1
Harvard University.....	16	University of Illinois at Urbana-Champaign.....	1
Harvey Mudd College.....	3	University of Massachusetts, Amherst.....	2
Hobart and William Smith Colleges.....	2	University of Miami.....	2
Howard University.....	1	University of Michigan.....	5
Instituto Tecnológico y de Estudios Superiores de Monterrey.....	1	University of New Hampshire, Durham.....	2
Johns Hopkins University.....	3	University of North Carolina, Chapel Hill.....	2
Keio University Mita.....	1	University of Notre Dame.....	2
Lafayette College.....	2	University of Oklahoma.....	1
Lehigh University.....	1	University of Oxford.....	2
Lewis & Clark College.....	1	University of Pennsylvania.....	8
Loyola Marymount University.....	1	University of Rochester.....	1
Loyola University New Orleans.....	1	University of San Francisco.....	1
Massachusetts Institute of Technology.....	7	University of South Florida, Tampa.....	1
McGill University.....	4	University of Southern California.....	4
Merrimack College.....	1	University of St. Andrews.....	3
Miami University, Oxford.....	1	University of Tennessee, Chattanooga.....	1
Middlebury College.....	1	University of Toronto (undergraduate only).....	1
Mount Holyoke College.....	1	University of Wisconsin, Madison.....	1
New York University.....	9	Vanderbilt University.....	2
Northeastern University.....	5	Villanova University.....	1
Northwestern University.....	2	University of Virginia.....	10
Oberlin College of Arts and Sciences.....	2	Washington University, St. Louis.....	3
Oxford College of Emory University.....	1	Wesleyan University.....	3
Pomona College.....	1	Whitman College.....	1
Princeton University.....	7	Williams College.....	5
Providence College.....	1	Yale University.....	7
Queen's University.....	2	<b>TOTAL</b>	<b>306</b>

Included are the 115 colleges where our graduates will enroll. The Class of 2017 applied to 269 colleges.

## NATIONAL MERIT SCHOLARSHIP PROGRAM 2017

Merit Finalists - 20

### COLLEGE/UNIVERSITY MATRICULATION

of Phillips Academy students  
over the past 3 years

#### 30+ STUDENTS

Harvard University  
New York University  
University of Chicago  
University of Pennsylvania

#### 20-29 STUDENTS

Boston College  
Brown University  
Columbia University  
Cornell University  
Massachusetts Institute of Technology  
Princeton University  
Stanford University  
Tufts University  
Yale University

#### 10-19 STUDENTS

Amherst College  
Barnard College  
Boston University  
Bowdoin College  
Carnegie Mellon University  
Dartmouth College  
Duke University  
Georgetown University  
McGill University  
Northwestern University  
University of California, Berkeley  
University of Massachusetts, Amherst  
University of Michigan  
University of Virginia  
Williams College

#### 5-9 STUDENTS

Bates College  
Bucknell University  
Claremont McKenna College  
Colby College  
Hobart and William Smith Colleges  
Middlebury College  
Northeastern University  
Oberlin College of Arts & Sciences  
Pomona College  
Rice University  
Swarthmore College  
The George Washington University  
The University of North Carolina at Chapel Hill  
Trinity College  
Union College  
University of California, Los Angeles  
University of Notre Dame  
University of Oxford  
University of Southern California  
University of St. Andrews  
Washington University in St. Louis  
Wesleyan University