

PHILLIPS ACADEMY | ANDOVER

2020–2021 Profile for College Admission Offices

THE ACADEMY

Phillips Academy (also known as Andover), a residential secondary school, seeks students of intelligence and integrity from diverse cultural, racial, socioeconomic and geographic backgrounds.

NEED-BLIND ADMISSION

In 2007, the Academy adopted a need-blind admission policy. The Academy meets 100 percent of demonstrated need.

EQUITY & INCLUSION

Andover is committed to establishing a community that encourages people of diverse backgrounds and beliefs to understand and respect one another and be sensitive to differences of gender, ethnicity, class, and sexual orientation. Andover's constitution charges the Academy to prepare "youth from every quarter" to understand that "goodness without knowledge is weak... yet knowledge without goodness is dangerous." Students of color constitute more than one-third of the student body. A typical entering class includes students from 40 or more states and 25 or more countries.

CAMPUS LIFE

In order to bring the advantages of a small school to Andover, we have adopted the cluster system. A cluster system is a group of residence halls in the same area. The cluster system includes five groups of about 220 students each. Each cluster functions independently, managing its own social activities, academic advising, disciplinary counseling, and athletic affairs under the leadership of a cluster dean.

ACTIVITIES

Each student spends approximately two hours every weekday afternoon in a required supervised activity. For most students, this is an athletics commitment at the varsity, junior varsity, or intramural level. For others, afternoons focus on volunteer work through the Community Engagement Program, independent musical pursuits, or physical fitness/endurance activities (e.g., Outdoor Pursuits, martial arts, dance).

LEARNING IN THE WORLD

Andover students can participate in several off-campus study programs both in the United States and in other countries. Some, such as School Year Abroad, are designed to last the entire academic year. Other programs take place during a single trimester or occur during the summer.

ACADEMIC EXCELLENCE

Under the trimester program, the school year is divided into three terms, each consisting of approximately 10 weeks of classes plus an assessment period. Many courses are yearlong, some are term-contained, and others are organized as two-term sequences. Students are normally expected to carry five courses each trimester. Most courses meet four or five periods per week. Some courses, as noted in the Course of

Study, meet six or more hours per week. Eleventh-graders or seniors who face an unusually demanding term occasionally are advised to enroll in four courses, provided at least three of these are advanced courses. Postgraduates usually take five courses per term (see list of Advanced Courses on page 2). Over the span of their last two years, students are required to complete at least 27 trimester units.

Andover's academic program is based upon the premise that students are capable of studying independently, responsibly, and with self-direction. As a result, students spend a significant number of hours on homework, research, and other out-of-class study and projects.

In most courses, especially those taken to meet diploma requirements, class time and homework together can be expected to require a total of about nine hours per week per course. Thus, a typical student enrolled in five courses can expect to spend at least 45 hours each week on academic pursuits—and more than that when significant papers are due or to prepare for exams.

DISCIPLINARY POLICY

Students and college counselors will work together to address questions about serious disciplinary infractions (suspension and probation) when asked on college applications.

1778
YEAR FOUNDED

13
AVERAGE CLASS SIZE

300+
AVAILABLE COURSES

PHILLIPS ACADEMY

180 Main Street
Andover, MA 01810-4161

School Code Number: 220030

Dr. Raynard Kington, Head of School

COLLEGE COUNSELING OFFICE

Sean M. Logan, Dean

Katherine B. Fritz, Director

ASSOCIATE DIRECTORS

Latasha L. Boyd

Dustin Bradley

Anya P. Brunnick

Meghan M. Dangremond

Karina E. Hernandez-Guarniz

Susan P. Kinney

Aya S. Murata

Nicole K. Shadeed

M. Kenneth Shows

LaShawn N. Springer

Taylor C. Ware

CONTACT INFORMATION

Phone: 978-749-4150

Fax: 978-749-4160

college-counseling@andover.edu

www.andover.edu/cco



Phillips Academy
ANDOVER

ACADEMY COURSES

COURSE NUMBERS

The first digit corresponds to the “level” of the course. The second and third digits (as in ART225) reflect organizational schemes at the departmental level and, therefore, will be used differently by different departments. Letters also are used for these purposes.

- Level 1 = 100; for courses that introduce a subject (SPA100) or that are typically taken by 9th-graders (BIO100, ENG100).
- Level 2 = 200; for courses that are the second level in a sequence (SPA200) or that are typically taken by 10th-graders or 9th-graders (ART225, HSS201).
- Level 3 = 300; for courses that are the third level in a sequence (SPA300), or for courses that are appropriate for 11th-graders (ENG300) or for 9th-, 10th-, and 11th-graders (PHR300,

CHM300), or for courses with assumed prior experience (ART3XX).

- Level 4 = 400; for courses that are the fourth level in a sequence, or for courses that are appropriate for 11th-graders or seniors (but do not qualify for the 500 or 600 designations).
- Level 5 = 500; for courses equivalent to college freshman classes, sometimes, but not always, indicated by explicit preparation for an AP exam.
- Level 6 = 600; for courses that would typically be taken by majors in the subject in college, or for courses typically taken after the first year of college.
- Performance-based credit = 900; for course credit associated with performance in music or theatre and dance.

ADVANCED COURSES

Listed below are all advanced, honors, and accelerated and/or Advanced Placement courses. These rigorous and demanding courses require extra preparation and study time. Most use college texts and are paced to match undergraduate offerings.

A few 300-level, some 400-level, and all 500-level courses are at or beyond typical AP level, and the 600-level courses are typically the equivalent of sophomore-level college courses. For course titles and descriptions, refer to Andover’s Course of Study, available at <https://www.andover.edu/files/COS2020-2021.pdf>.

Art

All 300–600-level studio courses are at a level appropriate for students interested in assembling an AP portfolio

Art 441, 442, and 443: History of Art are at AP level

English

All 500-level courses are at or beyond AP level

History and Social Science

History 300A, B and C are at AP level

All 500-level and above are at or beyond AP level

World Languages

Chinese 120, 220, and 320 are accelerated

Chinese 420 and 520 are advanced

Chinese 440 and 540 are heritage-track courses (beyond AP level)

Chinese 621, 622, and 633 are beyond AP level

Classics 150: Ancient Greek is accelerated

Classics 400 and 500: Ancient Greek are advanced

French 400, 401, and 520 are advanced

French 620 is beyond AP level

German 150 and 250 are accelerated

German 400 and 520 are advanced

German 600 is beyond AP level

Japanese 400, 420, 500, 520, and 600

Latin 150 is accelerated

Latin 520: Vergil and Caesar is at AP level

Latin 600 is beyond AP level

Russian 150 and 250 are accelerated

Russian 520 and 600 are advanced

Spanish 401, 402, 403; 411, 412, 413; 501, 502, 503

Spanish 521, 522, 523, 621, 622 and 623

Mathematics

Math 280 and 380 are accelerated

Math 575 and 595 are accelerated AP Calculus courses (AB and BC respectively)

Math 530 is an AP Statistics course

Math 539 is a project-based statistics course, which is also at the AP level

Math 630: Honors Mathematics Seminar

Math 650: Multivariable Calculus & Linear Algebra

Computer Science 500: AP Computer Science

Computer Science 630 Honors Seminar is beyond AP level

Music and the Performing Arts

Music 400, 410, 460, 500, 540, 550, 901, 903, and 906

Philosophy and Religious Studies

All 400- and 500-level courses

Science

Biology 501, 502, 503 is at AP level

Biology 581, 582, 583 is beyond AP level

Biology 600 and 620: Molecular and Cellular Biology: Laboratory Research

Chemistry 550 is at AP level

Chemistry 580 & 610: Organic Chemistry are beyond AP level

Physics 400

Physics 530: Astronomy Research

Physics 550 and 580 are at AP level

Physics 600, 630, and 650 are beyond AP level

Theatre and Dance

All 300- and 400-level electives are appropriate for portfolio preparation

THD510: Advanced Acting

THD539: August Wilson

THD900: Andover Dance Group Seminar

THD901: Advanced Practical Theatre Application

THD902: Advanced Studies in Dance Performance

THD903: Advanced Studies in Technical Theatre Production

THD910: Studio Production

THD920: Play Production Intensive

ACADEMIC STANDING

Students are not ranked, and we do not calculate a cumulative grade average.

GRADING SYSTEM

- The grading scale is from 0 to 6.
- A few courses are graded as Pass/ Fail.
- Assessment periods conclude November 20, March 5, and June 3.
- Beginning with the 2014–2015 academic year, there is no honor roll designation.

6 Outstanding (High Honor)

5 Superior (Honor)

4 Good

3 Satisfactory

2 Low Pass, but certifying

1 Failure

0 Low Failure

Please note that students receive Pass/Fail grades for English and history courses in the fall of 9th grade. For this reason, we do not compute a grade point average for this term.

THE 2020–2021 STUDENT BODY

Boarding 641

Day 337

Remote (for fall 2020) 208

Total 1,186

Students of Color 53%

CLASS DISTRIBUTION

Grade 12 319 (includes 23 postgraduates)

Grade 11 294

Grade 10 307

Grade 9 266

Total 1,186

GEOGRAPHIC DISTRIBUTION

40
number of states

(plus Washington, D.C. and Puerto Rico)

49
number of countries

132
number of international students

FINANCIAL AID

Percent of student body 45%

Total annual financial assistance \$23 million

SPRING 2020

For the 2019-20 school year, grades are reported in full-year and term-contained courses for the fall and winter terms.

For spring term, Phillips Academy moved to asynchronous online learning and all spring trimester courses were graded on a Pass/INC basis. Credit indicates that the student received a mark of Pass for all required work. A grade of NC indicates no credit, and acknowledges that work was not completed due to issues related to the COVID-19 pandemic.

With the entire spring trimester conducted virtually, interscholastic sports were cancelled while clubs and organizations continued online to the extent possible.

ACADEMIC YEAR 2020-2021

For the 2020-21 school year, students were able to enroll as boarding, day or remote learners. This status can be reclassified each trimester. Both boarding and day students are being invited back to campus on a staggered entry schedule as health and safety protocols are met.

Classes for all students are being held synchronously (in-person and virtually) with supplemental asynchronous resources provided as appropriate. The daily academic schedule has been expanded to accommodate a wide range of global time zones.

The grading scale for 2020-21 has been adjusted in acknowledgment of the profound challenges many of our students are facing this year. The updated scale is:

6- Outstanding; 5- Superior; 4- Good; P- Pass; 1- Failure; 0- Serious Failure

Interscholastic athletics were cancelled for the fall and winter with spring to be determined, however, there are a wide range of team and individual athletic options being offered. Students can participate on-campus and virtually in co-curricular opportunities in the arts, including dance, musical and theatrical productions. The Academy is offering a robust selection of extracurricular activities (clubs, organizations, community engagement) both in-person and virtually.

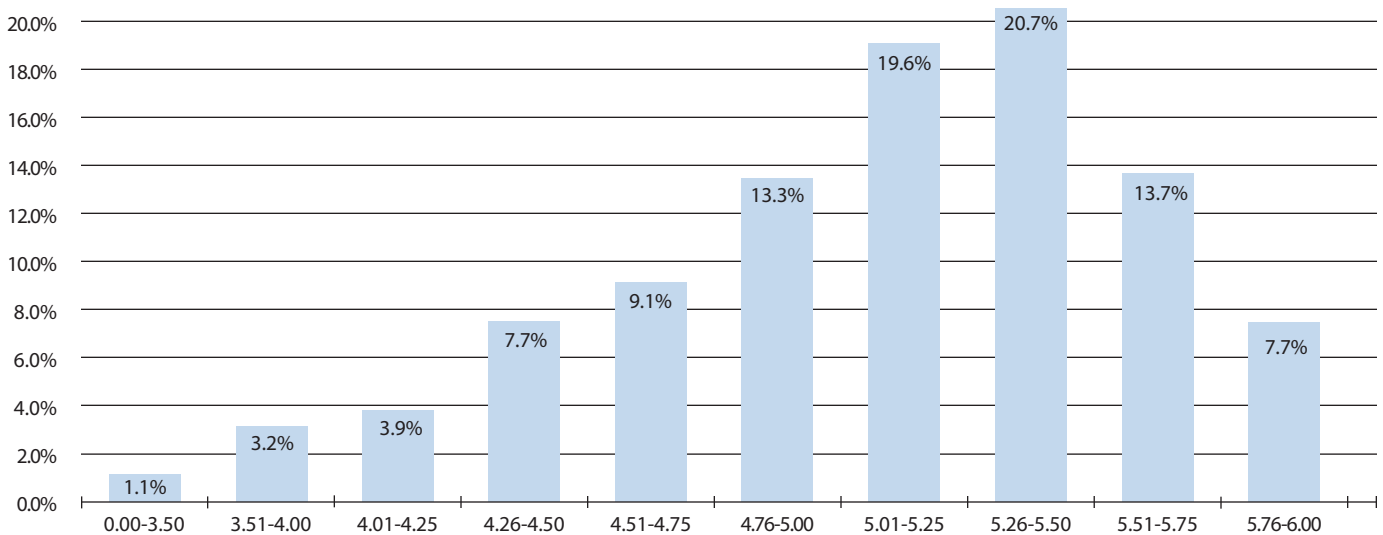
Leadership positions for the Class of 2021 were designated through the traditional selection processes last spring.

STANDARDIZED TESTING

Given the lack of opportunity for the Class of 2021 to test as a collective, we have chosen not to publish standardized testing data for this cohort.

GRADE DISTRIBUTION RANGE CLASS OF 2021

Combined average of all terms at Phillips Academy through winter term 2020



CLASS OF 2020 MATRICULATION STATISTICS

COLLEGE/UNIVERSITY	MAT	COLLEGE/UNIVERSITY	MAT
American University.....	3	Purdue University.....	1
Amherst College.....	2	Reed College.....	1
Assumption College.....	1	Rensselaer Polytechnic Institute.....	1
Bard College.....	1	Rutgers University.....	1
Barnard College.....	2	Scripps College.....	2
Bates College.....	1	Skidmore College.....	2
Binghamton University.....	1	Smith College.....	1
Boston College.....	6	Southern Methodist University.....	2
Boston University.....	3	St. Lawrence University.....	1
Bowdoin College.....	3	Stanford University.....	10
Brown University.....	7	The University of Edinburgh.....	1
Bryn Mawr.....	1	The University of North Carolina, Chapel Hill.....	2
Carleton College.....	2	The University of Texas, Austin.....	1
Carnegie Mellon University.....	6	Trinity College.....	4
Case Western Reserve University.....	2	Tufts University.....	7
Chapman University.....	1	Tulane University.....	1
Claremont McKenna College.....	4	Union College.....	2
Cleveland Institute of Music.....	1	United States Air Force Academy.....	1
Colby College.....	2	University of British Columbia.....	1
Colgate University.....	1	University of California, Berkeley.....	1
College of the Holy Cross.....	3	University of California, Los Angeles.....	2
Colorado College.....	2	University of California, Santa Barbara.....	1
Columbia University.....	8	University of California, Santa Cruz.....	2
Cornell University.....	7	University of Chicago.....	16
Dartmouth College.....	5	University of Colorado, Boulder.....	1
Duke University.....	1	University of Denver.....	1
Emmanuel College.....	1	University of Illinois at Urbana-Champaign.....	2
Emory University.....	2	University of Maryland, College Park.....	1
Fordham University.....	1	University of Massachusetts, Amherst.....	5
George Washington University.....	1	University of Michigan.....	5
Georgetown University.....	6	University of New Hampshire.....	1
Georgia Institute of Technology.....	1	University of Notre Dame.....	2
Hamilton College - NY.....	1	University of Pennsylvania.....	4
Harvard University.....	12	University of Richmond.....	1
Harvey Mudd College.....	3	University of Rochester.....	1
Howard University.....	1	University of South Carolina, Columbia.....	1
Indiana University at Bloomington.....	1	University of Southern California.....	1
Johns Hopkins University.....	2	University of St. Andrews.....	3
Lafayette College.....	2	University of Tokyo - PEAK.....	1
Lake Forest College.....	1	University of Toronto.....	1
Lehigh University.....	1	University of Vermont.....	1
Massachusetts Institute of Technology.....	8	University of Virginia.....	4
McGill University.....	6	University of Washington, Seattle.....	2
Miami University - Oxford.....	1	University of Waterloo.....	1
Middlebury College.....	3	Villanova University.....	2
Mississippi College.....	1	Virginia Tech.....	1
New York University.....	8	Washington and Lee University.....	1
New York University- Shanghai.....	1	Washington University, St. Louis.....	7
Northeastern University.....	5	Wellesley College.....	3
Northwestern University.....	2	Wesleyan University.....	2
Oberlin College of Arts and Sciences.....	1	William & Mary.....	1
Pennsylvania State University.....	1	Williams College.....	7
Plymouth State University.....	1	Yale University.....	9
Princeton University.....	7		
Providence College.....	1		
		TOTAL	294

Included are the 108 colleges where our graduates will enroll. The Class of 2020 applied to 282 colleges.

2021 NATIONAL MERIT SCHOLARSHIP PROGRAM

Semifinalists - 29

COLLEGE/UNIVERSITY MATRICULATION

of Phillips Academy students
over the past 3 years

30+ STUDENTS

Harvard University
Tufts University
University of Chicago
Yale University

20-29 STUDENTS

Boston College
Brown University
Columbia University
Cornell University
Georgetown University
Massachusetts Institute of Technology
New York University
University of Pennsylvania
Stanford University

10-19 STUDENTS

Amherst College
Barnard College
Boston University
Carnegie Mellon University
Claremont McKenna College
Dartmouth College
Northeastern University
Princeton University
Trinity College
University of California, Berkeley
University of Massachusetts, Amherst
University of Michigan
University of Virginia
Washington University in St. Louis
Wesleyan University
Williams College

5-9 STUDENTS

American University
Bates College
Bowdoin College
Brandeis University
Colgate University
Duke University
Emory University
Harvey Mudd College
McGill University
Middlebury College
Northwestern University
Scripps College
Smith College
Tulane University
University of California, Los Angeles
University of California, San Diego
University of Illinois at Urbana-Champaign
University of North Carolina at Chapel Hill
University of St. Andrews
University of Toronto
Villanova University
Wellesley College