

# PHILLIPS ACADEMY | ANDOVER

## 2018–2019 Profile for College Admission Offices

### THE ACADEMY

Phillips Academy (also known as Andover), a residential secondary school, seeks students of intelligence and integrity from diverse cultural, racial, socioeconomic and geographic backgrounds.

#### NEED-BLIND ADMISSION

In 2007, the Academy adopted a need-blind admission policy. The Academy meets 100 percent of demonstrated need.

#### EQUITY & INCLUSION

Andover is committed to establishing a community that encourages people of diverse backgrounds and beliefs to understand and respect one another and be sensitive to differences of gender, ethnicity, class, and sexual orientation. Andover's constitution charges the Academy to prepare "youth from every quarter" to understand that "goodness without knowledge is weak... yet knowledge without goodness is dangerous." Students of color constitute more than one-third of the student body. A typical entering class includes students from 40 or more states and 25 or more countries.

#### CAMPUS LIFE

In order to bring the advantages of a small school to Andover, we have adopted the cluster system. A cluster system is a group of residence halls in the same area. The cluster system includes five groups of about 220 students each. Each cluster functions independently, managing its own social activities, academic advising, disciplinary counseling, and athletic affairs under the leadership of a cluster dean.

#### LEARNING IN THE WORLD

Andover students can participate in several off-campus study programs both in the United States and in other countries. Some, such as School Year Abroad, are designed to last the entire academic year. Other programs take place during a single trimester or occur during the summer.

#### ACTIVITIES

Each student spends approximately two hours every weekday afternoon in a required supervised activity. For most students, this is an athletics commitment at the varsity, junior varsity, or intramural level. For others, afternoons focus on volunteer work through the Community Engagement Program, independent musical pursuits, or physical fitness/endurance activities (e.g., Outdoor Pursuits, martial arts, dance).

#### ACADEMIC EXCELLENCE

Under the trimester program, the school year is divided into three terms, each consisting of approximately 10 weeks of classes plus an assessment period. Many courses are yearlong, some are term-contained, and others

are organized as two-term sequences. Students are normally expected to carry five courses each trimester. Most courses meet four or five periods per week. Some courses, as noted in the Course of Study, meet six or more hours per week. Eleventh-graders or seniors who face an unusually demanding term occasionally are advised to enroll in four courses, provided at least three of

these are advanced courses. Postgraduates usually take five courses per term (see list of Advanced Courses on page 2). Over the span of their last two years, students are required to complete at least 27 trimester units.

Andover's academic program is based upon the premise that students are capable of studying independently, responsibly, and with self-direction. As a result, students spend a significant number of hours on homework, research, and other out-of-class study and projects.

In most courses, especially those taken to meet diploma requirements, class time and homework together can be expected to require a total of about nine hours per week per course. Thus, a typical student enrolled in five courses can expect to spend at least 45 hours each week on academic pursuits—and more than that when significant papers are due or to prepare for exams.

#### DISCIPLINARY POLICY

Students and college counselors will work together to address questions about serious disciplinary infractions (suspension and probation) when asked on college applications.

1778  
YEAR FOUNDED

13  
AVERAGE CLASS SIZE

300+  
AVAILABLE COURSES

#### PHILLIPS ACADEMY

180 Main Street  
Andover, MA 01810-4161

School Code Number: 220030  
John G. Palfrey, Head of School

#### COLLEGE COUNSELING OFFICE

Sean M. Logan, Dean  
Katherine B. Fritz, Director

#### ASSOCIATE DIRECTORS

Latasha L. Boyd  
Anya P. Brunnick  
Meghan M. Dangremond  
Magdalena L. Farnsworth  
Karina E. Hernandez-Guarniz  
Jermaine Matheson  
Aya S. Murata  
Nicole K. Shadeed  
M. Kenneth Shows  
Stephen A. Silversides  
LaShawn N. Springer  
Taylor C. Ware

#### CONTACT INFORMATION

Phone: 978-749-4150

Fax: 978-749-4160

[college-counseling@andover.edu](mailto:college-counseling@andover.edu)



Phillips Academy  
**ANDOVER**

## ACADEMY COURSES

### COURSE NUMBERS

The first digit corresponds to the “level” of the course. The second and third digits (as in ART225) reflect organizational schemes at the departmental level and, therefore, will be used differently by different departments. Letters also are used for these purposes.

- Level 1 = 100; for courses that introduce a subject (SPA100) or that are typically taken by 9th-graders (BIO100, ENG100).
- Level 2 = 200; for courses that are the second level in a sequence (SPA200) or that are typically taken by 10th-graders or 9th-graders (ART225, HSS201).
- Level 3 = 300; for courses that are the third level in a sequence (SPA300), or for courses that are appropriate for 11th-graders (ENG300) or for 9th-, 10th-, and 11th-graders (PHR300, CHM300), or for courses with assumed prior

experience (ART3XX).

- Level 4 = 400; for courses that are the fourth level in a sequence, or for courses that are appropriate for 11th-graders or seniors (but do not qualify for the 500 or 600 designations).
- Level 5 = 500; for courses equivalent to college freshman classes, sometimes, but not always, indicated by explicit preparation for an AP exam.
- Level 6 = 600; for courses that would typically be taken by majors in the subject in college, or for courses typically taken after the first year of college.
- Performance-based credit = 900; for course credit associated with performance in music or theatre and dance.

### ADVANCED COURSES

Listed below are all advanced, honors, and accelerated and/or Advanced Placement courses. These rigorous and demanding courses require extra preparation and study time. Most use college texts and are paced to match undergraduate offerings.

A few 300-level, some 400-level, and all 500-level courses are at or beyond typical AP level, and the 600-level courses are typically the equivalent of sophomore-level college courses.

For course titles and descriptions, refer to Andover’s Course of Study, available at <https://www.andover.edu/files/COS2018-2019.pdf>.

#### Art

All 300–600-level studio courses are at a level appropriate for students interested in assembling an AP portfolio  
Art 441, 442, and 443: History of Art are at AP level

#### English

All 500-level courses are at or beyond AP level

#### History and Social Science

History 300–310 are at AP level  
History 501, 502 and 503

All 500-level and above are at or beyond AP level

#### Mathematics

All 280–595 level courses are at a level appropriate for students interested in assembling an AP portfolio

Math 630: Honors Seminar, 651, and 661 (discontinued as of fall 2014) are beyond AP level

Math 650: Multivariable Calculus and Linear Algebra is beyond AP level

Computer Science 500: AP Computer Science

Computer Science 630 Honors Seminar is beyond AP level

#### World Languages

Arabic 120 is accelerated

Chinese 120, 220, and 320 are accelerated

Chinese 420 and 520 are advanced

Chinese 440 and 540 are heritage-track courses

Chinese 500 and 600 (discontinued as of fall 2014)

Chinese 621, 622, and 633 are beyond AP level

Classics 150: Ancient Greek is accelerated

Classics 400 and 500: Ancient Greek are advanced

French 400, 401, and 520 are advanced

French 620 is beyond AP level

German 150 and 250 are accelerated

German 400 and 520 are advanced

German 600 is beyond AP level

Japanese 400, 420, 500, 520, and 600

Latin 150 is accelerated

Latin 520: Vergil and Caesar is at AP level

Latin 600 is beyond AP level

Russian 150 and 250 are accelerated

Russian 520 and 600 are advanced

Spanish 401, 402, 403; 411, 412, 413; 501, 502, 503

Spanish 521, 522, 523, 621, 622 and 623

#### Music and the Performing Arts

Music 400, 410, 460, 500, 540, 550, 901, 903, and 906

Music 485 & 530 (both discontinued as of fall 2016)

#### Philosophy and Religious Studies

All 400- and 500-level courses

#### Science

Biology 501, 502, 503 is at AP level

Biology 540, 560, and 570 (discontinued as of fall 2014)

Biology 581, 582, 583 is beyond AP level

Biology 600 and 620: Molecular and Cellular Biology: Laboratory Research

Chemistry 550 is at AP level

Chemistry 580 & 610: Organic Chemistry are beyond AP level

Physics 395 (discontinued as of fall 2014)

Physics 400

Physics 530: Astronomy Research

Physics 550 and 580 are at AP level

Physics 600, 630, and 650 are beyond AP level

#### Theatre and Dance

All 300- and 400-level electives are appropriate for portfolio preparation

THD510: Advanced Acting

THD539: August Wilson

THD565 (discontinued as of fall 2015)

THD900: Andover Dance Group Seminar

THD901: Advanced Practical Theatre Application

THD902: Advanced Studies in Dance Performance

THD903: Advanced Studies in Technical Theatre Production

THD910: Studio Production

THD920: Play Production Intensive

### ACADEMIC STANDING

Students are not ranked, and we do not calculate a cumulative grade average.

### GRADING SYSTEM

- The grading scale is from 0 to 6.
- A few courses are graded as Pass/ Fail.
- Assessment periods conclude November 16, March 1, and May 30.
- Beginning with the 2014–2015 academic year, there is no honor roll designation.

6 Outstanding (High Honor)

5 Superior (Honor)

4 Good

3 Satisfactory

2 Low Pass, but certifying

1 Failure

0 Low Failure

Please note that students receive Pass/Fail grades for English and history courses in the fall of 9th grade. For this reason, we do not compute a grade point average for this term.

### THE 2018–2019 STUDENT BODY

	Males	Females	Total
Boarding	412	432	844
Day	157	143	300
<b>Total</b>	<b>569</b>	<b>575</b>	<b>1,144</b>
Students of Color	50%		

### CLASS DISTRIBUTION

Grade 12	332 (includes 26 postgraduates)
Grade 11	298
Grade 10	288
Grade 9	226
<b>Total</b>	<b>1,144</b>

### GEOGRAPHIC DISTRIBUTION

44  
number of states (plus Washington, D.C.)

49  
number of countries

139  
number of international students

### FINANCIAL AID

Percent of student body 48%

Total annual financial assistance \$22 million

# CLASS OF 2019 STANDARDIZED TESTING

## SAT SUMMARY 1600 (245 students)

Section	Middle 50%	Mean
Evidence Based Reading & Writing	670–760	720
Math	35–40	37
Mathematics	690–790	740
Reading	33–37	36
Writing	34–39	37

## SAT SUMMARY 2400 (6 students)

Section	Middle 50%	Mean
Critical Reading	660–730	698
Mathematics	740–770	732
Writing	610–710	660

## ACT SUMMARY (138 students)

Section	Middle 50%	Mean
ELA	27–31	27.8
English	31–35	32.6
Math	28–34	30.9
Reading	30–35	31.9
Science	25–33	29.5
STEM	27–33	30.3
Writing	8–9	8.0
Composite	29–34	31.1

## ADVANCED PLACEMENT TESTS

77 candidates from the Class of 2019 sat for 194 examinations. The overall distribution of scores is:

5	74%
4	15%
3	8%
2	3%
1	0%

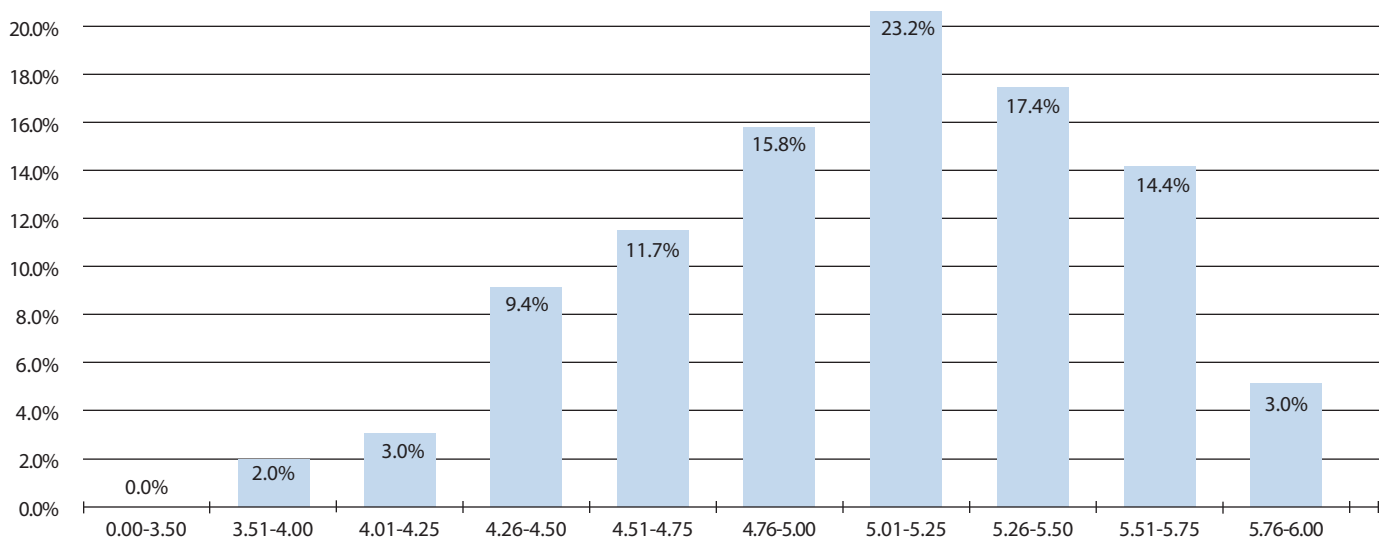
## SAT SUBJECT TEST

Class of 2019

Subject	Mean Score	No. of Tests
BY-E	691	43
BY-M	700	13
CH	694	81
CL	663	4
EN	671	78
FL	738	4
FR	686	14
GL	640	1
GM	632	5
IT	720	1
LT	723	4
M1	681	16
M2	734	183
PH	713	52
SP	686	18
UH	644	22
WH	646	5

## GRADE DISTRIBUTION RANGE CLASS OF 2019

Combined average of all terms at Phillips Academy as of June 2018



# CLASS OF 2018 MATRICULATION STATISTICS

COLLEGE/UNIVERSITY	MAT	COLLEGE/UNIVERSITY	MAT
Amherst College	4	Northwestern University	1
Assumption College	1	Ozarks Technical Community College	1
Babson College	2	Pomona College	1
Bard College	1	Princeton University	5
Barnard College	6	Rensselaer Polytechnic Institute	2
Baylor University	1	Rice University	1
Berklee College of Music	1	Sacred Heart University	1
Boston College	8	Saint Anselm College	2
Boston University	7	Scripps College	1
Bowdoin College	3	Stanford University	6
Brandeis University	4	SUNY Polytechnic Institute	1
Brown University	14	Swarthmore College	1
Bryn Mawr College	1	Syracuse University	1
Carleton College	1	The George Washington University	3
Carnegie Mellon University	6	The University of Tampa	1
Case Western Reserve University	1	Trinity College	3
Claremont McKenna College	1	Tufts University	11
Clemson University	1	Tulane University	5
Colby College	1	Union College	1
Colgate University	2	University of California, Berkeley	9
Columbia University	9	University of California, Los Angeles	2
Connecticut College	1	University of California, San Diego	1
Cornell University	10	University of California, Santa Barbara	1
Dartmouth College	6	University of Chicago	17
Dickinson College	1	University of Illinois at Urbana-Champaign	1
Drew University	1	University of Maryland, College Park	2
Drexel University	1	University of Massachusetts, Amherst	7
Duke University	2	University of Michigan	3
Durham University	1	University of New Hampshire, Durham	1
Ecole Hoteliere de Lausanne	1	University of North Carolina, Chapel Hill	2
Elon University	1	University of Notre Dame	2
Emory University	1	University of Oregon	1
Franklin & Marshall College	1	University of Oxford	3
Georgetown University	9	University of Pennsylvania	8
Grinnel College	1	University of Richmond	1
Harvard University	11	University of Rochester	1
Harvey Mudd College	1	University of Southern California	3
High Point University	1	University of St. Andrews	2
Howard University	1	University of Tokyo- PEAK	1
Johns Hopkins University	1	University of Toronto (undergraduate only)	3
Korea Advanced Institute of Science & Tech	1	University of Vermont	1
Kenyon College	1	University of Virginia	9
King's College London	1	University of Washington	2
Loyola Marymount University	1	University of Wisconsin, Madison	1
Loyola University New Orleans	1	United States Military Academy- Army	1
Marist College	1	United States Naval Academy	1
Massachusetts Institute of Technology	8	Vanderbilt University	1
McGill University	1	Washington University, St. Louis	3
Middlebury College	3	Wellesley College	2
Mount Holyoke College	1	Wesleyan University	4
New York University	9	Williams College	3
New York University Shanghai	2	Yale University	14
Northeastern University	3		
		<b>TOTAL</b>	<b>321</b>

Included are the 105 colleges where our graduates will enroll. The Class of 2018 applied to 277 colleges.

## NATIONAL MERIT SCHOLARSHIP PROGRAM 2018

Merit Finalists - 20

### COLLEGE/UNIVERSITY MATRICULATION

of Phillips Academy students  
over the past 3 years

#### 30+ STUDENTS

Brown University  
Harvard University  
New York University  
Tufts University  
University of Chicago

#### 20-29 STUDENTS

Boston College  
Columbia University  
Cornell University  
Massachusetts Institute of Technology  
Princeton University  
Stanford University  
University of Pennsylvania  
University of Virginia  
Yale University

#### 10-19 STUDENTS

Amherst College  
Barnard College  
Boston University  
Carnegie Mellon University  
Dartmouth College  
Georgetown University  
Northeastern University  
University of California, Berkeley  
University of Massachusetts, Amherst  
University of Michigan  
Wesleyan University  
Williams College

#### 5-9 STUDENTS

Bates College  
Bowdoin College  
Brandeis University  
Case Western Reserve University  
Claremont McKenna College  
Colby College  
Colgate University  
Duke University  
Harvey Mudd College  
Johns Hopkins University  
McGill University  
Middlebury College  
Northwestern University  
Pomona College  
Rice University  
Swarthmore College  
The George Washington University  
The University of North Carolina at Chapel Hill  
Trinity College  
Tulane University  
University of California, Los Angeles  
University of New Hampshire  
University of Notre Dame  
University of Oxford  
University of Southern California  
University of St. Andrews  
University of Toronto  
University of Washington  
Washington University in St. Louis