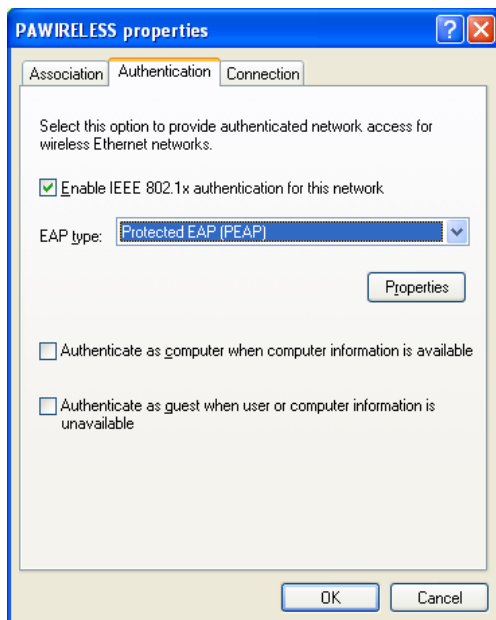
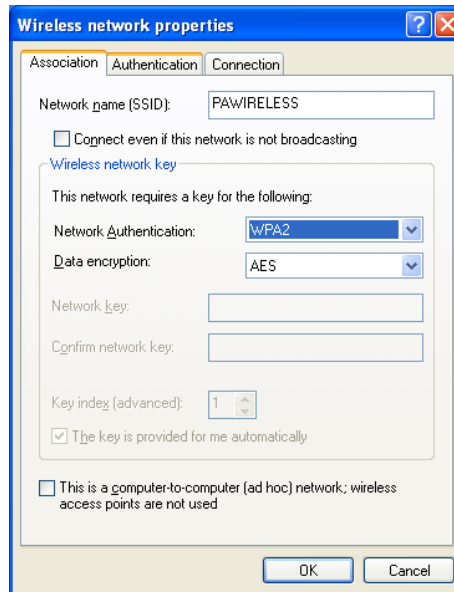
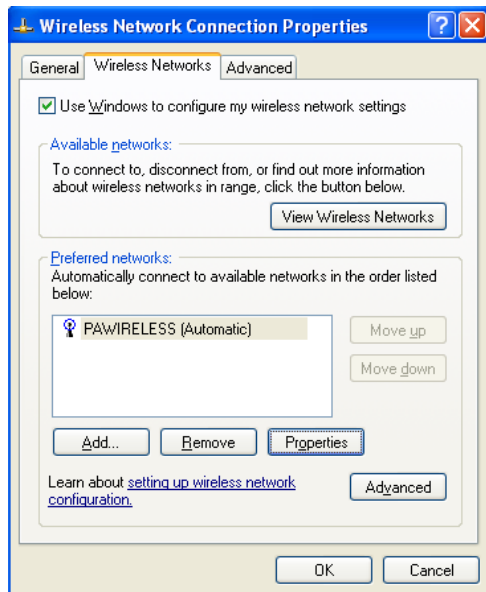


PAWIRELESS on a Windows XP Computer

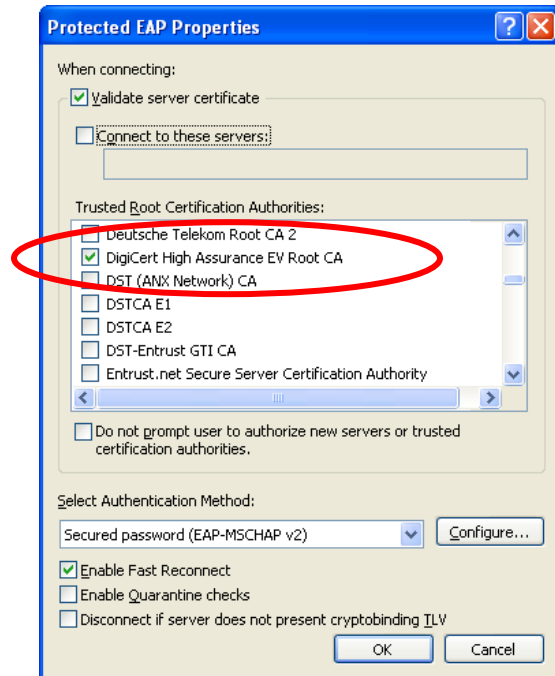
These instructions can only be used for a **PERSONALLY-OWNED** computer that will be connecting to PAWIRELESS using Windows XP.

1. Click the **Start** button, then click **Run**. Type **ncpa.cpl** and click **OK**. This opens the **Network Connections Control Panel**.
2. Right-click **Wireless Network Connection** and select **Properties**.
3. Select the **Wireless Networks** tab.
4. Under **Preferred Networks**, click **PAWIRELESS** and then click **Properties**. If **PAWIRELESS** doesn't display in the box, click **Add...** and type **PAWIRELESS** (in all caps) in the **Network Name** field.
5. Under the **Association** tab, make sure that **Network Authentication** is set for **WPA2**, the **Data encryption** is set to **AES** and that the checkbox for **The key is provided for me automatically** is checked.

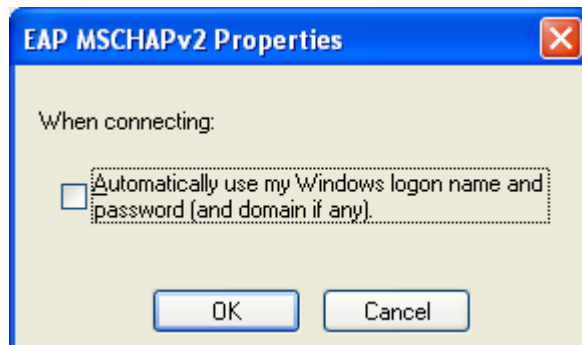


6. Under the **Authentication** tab, make sure that there is a check on **Enable IEEE...** and that the selected **EAP type** is **Protected EAP(PEAP)**
7. Below the EAP pull down menu, click on the **Properties** button to view the **Protected EAP Properties** window (next page). **Authenticate as computer...** and **Authenticate as guest...** should not be checked.

8. **Validate server certificate** must be checked. Under **Trusted Root Certification Authorities**, check **Digicert High Assurance EV Root CA**, and then check the **Enable Fast Reconnect** near the bottom of the window.



9. Next to **Select Authentication Method:** click on the **Configure** button. In the **EAP MSCHAPv2 Properties** window, on a personally owned computer **Automatically use my Windows logon name**, must be unchecked.



10. Click **OK** to close each of the windows that are open. In the lower-right corner of the computer screen, click on the bubble called **Wireless Network Connection**.

Login using your **PAnet username** and **password** using **ANDOVER** as the domain. You should now be connected to the Academy network via PAWIRELESS.



Welcome to the Phillips Academy Wireless Network!