



Phillips Academy
ANDOVER

School Code Number: 220030

John G. Palfrey Jr., *Head of School*

COLLEGE COUNSELING OFFICE
Sean M. Logan, *Director*
Anne Ferguson, *Senior Associate Director*

Associate Directors:
Karina E. Hernandez-Guarniz,
Aya S. Murata, M. Kenneth Shows,
Stephen A. Silversides, LaShawn N. Springer

Consultants:
Carl W. Bewig, Anya P. Brunnick

2013–2014 PROFILE

FOR COLLEGE ADMISSION OFFICES

978-749-4150; fax 978-749-4160
college-counseling@andover.edu
www.andover.edu/cco

Prepared July 2013

THE SCHOOL

Phillips Academy, founded in 1778, is a coeducational boarding school, grades 9–12 and postgraduate. In 1973 the school merged with Abbot Academy, the oldest chartered girls' school in New England. Andover is committed to enrolling able students from all economic levels, from every racial, religious, and ethnic entity, from every quarter of American life and from foreign lands.

STUDENT DIVERSITY

The Academy is committed to establishing a community that encourages people of diverse backgrounds and beliefs to understand and respect one another and to be sensitive to differences of gender, ethnicity, class, and sexual orientation. Andover's 1778 Constitution charges the Academy to prepare "youth from every quarter" to understand that "goodness without knowledge is weak ... yet knowledge without goodness is dangerous." Students of color constitute more than one-third of the student body. A typical entering class contains students from 40 or more states and 25 or more countries.

NEED-BLIND ADMISSION

In 2007, the Academy adopted a need-blind admission policy. The Academy meets 100 percent of demonstrated need.

THE CLUSTER SYSTEM

In order to bring the advantages of a small school to an institution that already has the advantage of size, Andover has adopted the cluster system. A cluster can be defined as a group of contiguous residence halls. Comments by applicants and counselors regarding cluster activities refer to five groups of about 220 students each. A cluster functions independently, managing its own social activities, academic advising, disciplinary counseling, and athletic affairs under the leadership of a cluster dean.

OFF-CAMPUS PROGRAMS

Andover students can participate in several off-campus study programs both in the United States and in other countries. Some, such as School Year Abroad, encompass the entire academic year, while others are for one trimester or occur during the summer.

ACTIVITIES

Each student spends approximately two hours every weekday afternoon in a required supervised activity. For most students, this is an athletic commitment at the varsity, junior varsity, or intramural level. For others, afternoons focus on volunteer work through the Community Service Program, independent musical pursuits, or physical fitness/endurance activities (e.g., Outdoor Pursuits, martial arts, dance).

POLICY ON DISCIPLINE

Students and college counselors will work together to address questions about serious disciplinary infractions (suspension and probation) when asked on college applications.

THE ACADEMIC PROGRAM

Andover's *Course of Study* is available online at www.andover.edu/academics/coursecatalog.

Average class size—13 students Available courses—300+

Under the Trimester Program, the school year is divided into three terms, each consisting of approximately 10 weeks of classes plus an assessment period. Many courses are yearlong, some are term-contained, and others are organized as two-term sequences. Students are normally expected to carry five courses each trimester. Most courses meet four or five periods per week. Some courses, as noted in the *Course of Study*, meet six or more hours per week per course. Uppers (11th-graders) or seniors who face an unusually demanding term occasionally are advised to enroll in four courses, provided at least three of these are advanced courses. Postgraduates usually take four courses per term (see list of Advanced Courses). Over the span of their last two years, students are required to complete at least 27 trimester units.

Phillips Academy's academic program is based upon the premise that students are capable of studying independently, responsibly, and with self-direction. As a result, students spend a significant number of hours on homework, research, and other out-of-class study and projects.

In most courses, especially those taken to meet diploma requirements, class time and homework together can be expected to require a total of about nine hours per week per course. Thus, a typical student enrolled in five courses can expect to spend at least 45 hours each week on academic pursuits—and more than that when significant papers are due or to prepare for exams.

GRADING SYSTEM

The grading scale is from 0 to 6. A few courses are graded as Pass/Fail. Assessment periods conclude November 22, March 6, and June 5.

6 – Outstanding (High Honor)

5 – Superior (Honor)

4 – Good

3 – Satisfactory

2 – Low Pass, but certifying

1 – Failure

0 – Low Failure

Please note that students receive Pass/Fail grades for English and history courses in the fall of 9th grade. For this reason, we do not compute a grade point average for this term.

STATEMENT ON CLASS RANK

The faculty has chosen not to rank students. Because of the highly competitive nature of admission to Andover, the variety of academic backgrounds of our students, and the various points at which students may enter the school, attempting to calculate a numeric rank that reflects the strengths and differences within and among students would not yield a fair or useful picture of a graduating class. All enrolled students, regardless of grade level, must be candidates for the diploma.

DIPLOMA REQUIREMENTS

Diploma requirements vary according to the grade-year in which students enter. These requirements also vary depending upon the student's initial level of placement. Although most entering students receive an assortment of such credits toward the diploma, a four-year student entering Phillips Academy placed at the beginning level across the curriculum must complete the following diploma requirements:

- 9 trimester credits of English
- 9 trimester credits of foreign language
- 8 trimester credits of mathematics (through precalculus)
- 7 trimester credits of history and social science
- 6 trimester credits of laboratory science
- 4 trimesters of art, music, theatre, and dance (with at least 1 trimester each in art and music)
- 1 trimester of philosophy and religious studies
- 1 trimester of physical education

The diploma requirements are designed to maximize academic breadth while preserving depth via electives. Please note that it is typical for students to go beyond Andover diploma requirements in many areas. Diploma requirements are discussed in greater detail on pages 4 and 5 of the *Course of Study*, and online at www.andover.edu/academics/thecurriculum.

Within the framework of these diploma requirements, students follow an individualized program of study. The common pedagogical threads include (1) matching students with appropriately demanding academic challenges; (2) daily accountability in class meetings; and (3) an insistence on rigor in all courses.

INDEPENDENT RESEARCH PROGRAMS

Students who have exhausted the curriculum in one or more disciplines may pursue an independent research program. Working closely with one or more faculty members, students delve deep into a topic of their choice. IPs may be graded 0–6 or Pass/Fail.

COURSE NUMBERS

The first digit corresponds to the “level” of the course:

- Level 1 = 100; for courses that introduce a subject (*SPAN-100*) or that are typically taken by juniors (9th-graders) (*BIOL-100*, *ENGL-100*).
- Level 2 = 200; for courses that are the second level in a sequence (*SPAN-200*) or that are typically taken by lowers (10th-graders) or juniors (*ART-225*, *HIST-200*).

- Level 3 = 300; for courses that are the third level in a sequence (*SPAN-300*), or for courses that are appropriate for uppers (*ENGL-300*) or for juniors, lowers, and uppers (*PHRE-300*, *CHEM-300*).
- Level 4 = 400; for courses that are the fourth level in a sequence, or for courses that are appropriate for seniors (but do not qualify for the 500 or 600 designations).
- Level 5 = 500; for courses that are equivalent to college freshman classes, sometimes, but not always, indicated by explicit preparation for an AP exam.
- Level 6 = 600; for courses that would typically be taken by majors in the subject in college, or for courses typically taken after the first year of college.
- Performance-based credit = 900; for course credit associated with performance, such as music lessons or participation in music ensembles for credit. Numbers followed by “H” indicate higher-level performance requirements, such as ensembles with competitive auditions.

The second and third digits (as in *ART-225*) reflect organizational schemes at the departmental level, and therefore will be used differently by different departments. Letters also are used for these purposes.

ADVANCED COURSES

Listed here are all advanced, honors, and accelerated and/or Advanced Placement courses. These rigorous and demanding courses require extra preparation and study time. Most use college texts and are paced to match undergraduate offerings. A few 300-level, some 400-level, and all 500-level courses are at or beyond typical AP level, and the 600-level courses are typically the equivalent of sophomore-level college courses. Refer to Andover's *Course of Study*, available in print and online at www.andover.edu/academics/coursecatalog, for course titles and descriptions.

Art

- All 400-level studio courses
- Art 400 History of Art
- All 500-level studio courses
- All 600-level studio courses

English

- All 500-level courses are at or beyond AP level

History and Social Science

- History 300–310 are at AP level
- History 520 and 521 together prepare for
Macro and Micro Economics AP
- All 500-level and above are at or beyond AP level

Mathematics

- Math 280 Accelerated Geometry and Precalculus
- Math 380 Accelerated Precalculus
- Math 530 AP Statistics
- Math 560, 570 AP Calculus AB
- Math 575 Accelerated AP Calculus AB

Math 580, 590 AP Calculus BC
 Math 595 Accelerated AP Calculus BC
 Math 630 Honors Seminar is beyond AP level
 Math 650 Multivariable Calculus and Linear Algebra
 Math 651, 661 are beyond AP level (*discontinued as of fall 2014*)
 Computer 500 AP Computer Science AB
 Computer 630 Honors Seminar is beyond AP level

World Languages

Arabic 120, 220 (*discontinued as of fall 2012*)
 Chinese 120, 220, 320 are all accelerated
 Chinese 400, 420, 500 are all advanced
 Chinese 520 (AP Chinese)
 Chinese 600 (*discontinued as of fall 2014*)
 Chinese 620, 640, 641, 642 are all beyond AP level
 French 120, 220, 320 are all accelerated
 French 400, 420, 520 are all advanced
 French 600 is beyond AP level
 German 150, 250 are both accelerated
 German 400, 520, 600 are all advanced
 Greek 150
 Japanese 400, 420, 500, 520, 600
 Latin 150, 520 Lyric, Horace, and Catullus, 520 Vergil
 Russian 150, 250, 400, 520, 600
 Spanish 120, 220, 320 are all accelerated
 Spanish 400, 401 are both advanced
 Spanish 500, 510, 511 are all at AP level
 Spanish 520, 521, 620 are all beyond AP level
 Spanish 550 (*discontinued as of fall 2014*)

Music and the Performing Arts

Music 400, 410, 460, 485, 500, 530, 540, 550

Philosophy and Religious Studies

All 400- and 500-level courses

Science

Biology 540, 560, 570, 580 are all at AP level
 Biology 600, 610 (Molecular and Cellular Biology Research)
 Chemistry 300
 Chemistry 500 (AP 2013–2014 and beyond)
 Chemistry AP 550
 Chemistry 580 is beyond AP level
 Chemistry 610 Organic Chemistry is beyond AP level
 Physics 395, 400
 Physics 520
 Physics 530 Astronomy Research
 Physics 550, 580 are both at AP level
 Physics 600, 630, 650 are all beyond AP level

Theatre and Dance

Theatre Theory and History 330
 Creative Self 370
 Acting and Directing Workshop 510
 Play Production Intensive 520/920
 Andover Dance Group Seminar 900

THE 2013–2014 STUDENT BODY

	BOYS	GIRLS	TOTAL
Boarding	422	416	838
Day	145	142	287
TOTAL	567	558	1,125

Students of Color—41%

Class Distribution

Grade 12—338 (includes 34 postgraduates)
 Grade 11—308
 Grade 10—272
 Grade 9—207
 Total enrollment—1,125

Geographic Distribution of Students

47 states, 39 countries, and 156 international students

Financial Aid

Percent of student body—47%
 Total financial assistance—\$18,875,000

Admission Statistics

Completed applications 3,029
 Admitted 400 (*Admit Rate—13%*)
 Matriculated 317 (*Yield—79%*)
 Class rank median 99th percentile for new students

THE 2013–2014 FACULTY

Most Andover instructors live on campus and also serve as dormitory counselors, academic advisors, and/or coaches.

	MEN	WOMEN	TOTAL
Full-time	92	81	173
Part-time	20	26	46
TOTAL	112	107	219

Highest Degrees

PhD 44
 JD 1
 Master's 124
 Bachelor's 50 (includes Teaching Fellows)
 No degree 2

Academic Standing

Students are not ranked, and we do not calculate a cumulative grade average.

SAT Reasoning

Class of 2012 through June 2012 (279 students)

	Critical Reading	Math	Writing
700–800	44%	46%	44%
600–690	42%	41%	39%
500–590	13%	12%	15%
400–490	1%	1%	2%
Mean	678	684	675
(National Mean)	(496)	(514)	(488)

ACT

Averages of all PA students tested in 2011–2012

Total # Tested	English	Math	Reading	Science	Composite
190	30.9	30.2	30.4	28.8	30.2
(National Mean)	(23.9)	(24.5)	(24.2)	(23.2)	(24.1)

Advanced Placement Examination

In 2012, 398 candidates sat for 728 examinations.

The overall distribution of scores is:

5—64% 4—22% 3—10% 2—3% 1—1%

CLASS OF 2013—National Merit Scholarship Program

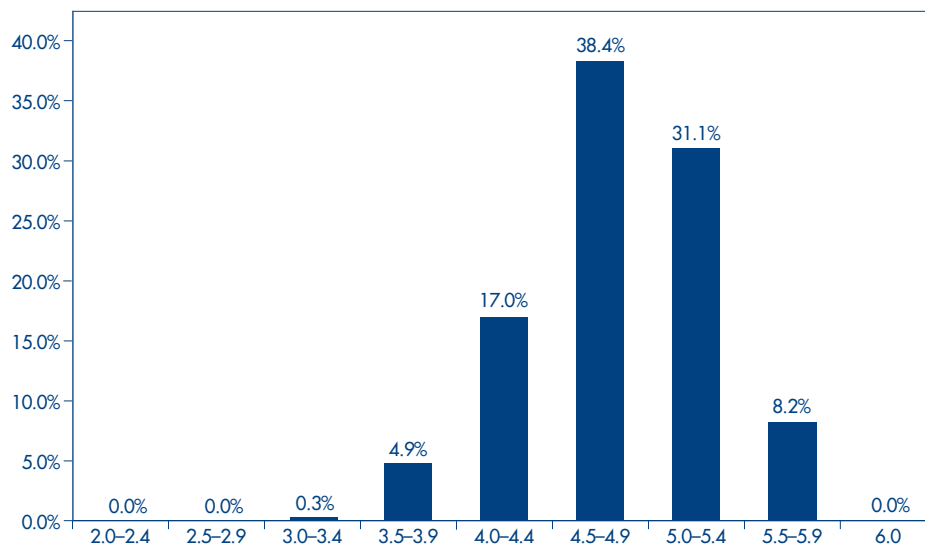
Merit Semifinalists—27; Achievement Semifinalists—3

SAT Subject Test

Class of 2012 through June 2012

Subject	Mean Score	(National Mean)	No. of Tests
LR	667	(604)	119
UH	656	(640)	90
WH	677	(619)	7
M1	649	(617)	49
M2	718	(677)	205
BY-E	670	(623)	38
BY-M	692	(654)	62
CH	677	(662)	112
PH	719	(662)	37
CL	725	(759)	13
FR	706	(631)	27
FL	706	(656)	8
LT	692	(616)	5
SP	697	(649)	32
SL	672	(670)	11

CLASS OF 2014 GRADE RANGE DISTRIBUTION, JULY 2013





Phillips Academy
ANDOVER

CLASS OF 2013 MATRICULATION STATISTICS
as of July 31, 2013

COLLEGE/UNIVERSITY	MAT	COLLEGE/UNIVERSITY	MAT	COLLEGE/UNIVERSITY	MAT
American University	2	Georgetown University	14	University of Richmond	1
Babson College	2	Georgia Institute of Technology	3	Saint Michael's College	2
Bates College	3	Goucher College	1	Sarah Lawrence College	1
Bentley University	2	Hamilton College	3	Skidmore College	1
Boston College	8	Harvard College	18	Smith College	1
Boston University	1	Harvey Mudd College	1	Univ. of Southern California	2
Bowdoin College	2	Haverford College	1	Univ. of St. Andrews (Scotland)	1
Brandeis University	1	Hong Kong Univ. of Sci. & Tech.	1	St. Olaf College	1
Brown University	9	Univ. of Illinois–Urbana-Champaign	2	Stanford University	8
Bryn Mawr College	1	Johns Hopkins University	4	Temple University	1
Bucknell University	1	Kenyon College	2	Texas A&M University	2
Univ. of California–Berkeley	2	Lafayette College	2	University of Texas–Austin	1
Univ. of California–Los Angeles	4	Lehigh University	1	Trinity College	3
Univ. of California–Santa Cruz	1	Macalester College	1	Tufts University	6
California Institute of Technology	1	Univ. of Maryland–College Park	2	Tulane University	2
Carleton College	1	MIT	3	Union College	1
Carnegie Mellon University	5	Univ. of Massachusetts–Amherst	6	United States Military Academy	1
Case Western Reserve University	1	McGill University	4	Vanderbilt University	3
University of Chicago	6	University of Michigan	5	Vassar College	3
Claremont McKenna College	2	Univ. of Minnesota–Twin Cities	1	University of Vermont	1
Clemson University	2	New York University	6	Villanova University	2
Colby College	6	Newcastle University	1	University of Virginia	2
Colgate University	5	Univ. of North Carolina–Chapel Hill	2	Wake Forest University	2
Columbia University	13	Northeastern University	1	Washington University in St. Louis	3
Cornell University	12	Northwestern University	4	University of Washington	1
Dartmouth College	5	University of Notre Dame	2	Wellesley College	2
Duke University	2	Oberlin College	2	Wesleyan University	6
Elon University	1	University of Pennsylvania	16	College of William and Mary	2
Emerson College	1	Princeton University	4	Williams College	5
Emory University	2	Reed College	2	Worcester Polytechnic Institute	2
Franklin and Marshall College	1	Rensselaer Polytechnic Institute	2	Yale University	15
George Washington University	5	Rice University	1	TOTAL	312

Included are the 95 colleges where our graduates will enroll. The Class of 2013 applied to 264 colleges.



Phillips Academy
ANDOVER

COLLEGE MATRICULATION

In the past three years, five or more Phillips Academy students
have matriculated at each of the following institutions.

COLLEGE/UNIVERSITY	MAT	COLLEGE/UNIVERSITY	MAT
Amherst College	8	McGill University	5
Bates College	9	University of Michigan	11
Boston College	17	MIT	12
Boston University	8	New York University	22
Bowdoin College	11	Univ. of North Carolina–Chapel Hill	8
Brandeis University	5	Northeastern University	7
Brown University	20	Northwestern University	11
Univ. of California–Berkeley	5	University of Oxford (England)	5
Univ. of California–Los Angeles	8	University of Pennsylvania	36
Carnegie Mellon University	16	Princeton University	17
University of Chicago	20	Reed College	5
Claremont McKenna College	9	Rice University	5
Colby College	10	Smith College	5
Colgate University	8	Univ. of Southern California	15
Columbia University	39	Stanford University	32
Cornell University	31	Trinity College (Connecticut)	11
Dartmouth College	16	Tufts University	20
Duke University	15	Tulane University	11
Emory University	8	Vanderbilt University	8
George Washington University	11	Vassar College	5
Georgetown University	28	University of Virginia	5
Georgia Institute of Technology	7	Washington University in St. Louis	19
Hamilton College	5	Wellesley College	10
Harvard College	42	Wesleyan University	18
College of the Holy Cross	7	College of William and Mary	6
Johns Hopkins University	9	Williams College	12
Lafayette College	5	Yale University	41
Univ. of Massachusetts–Amherst	14		